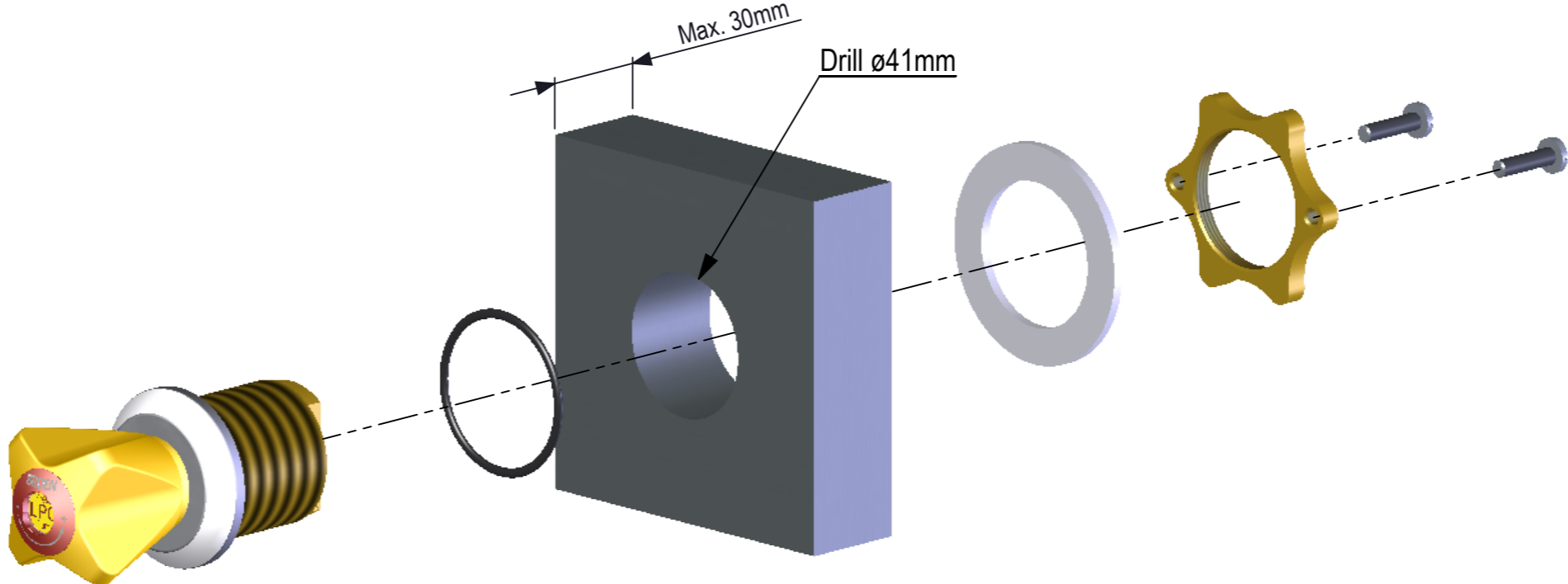
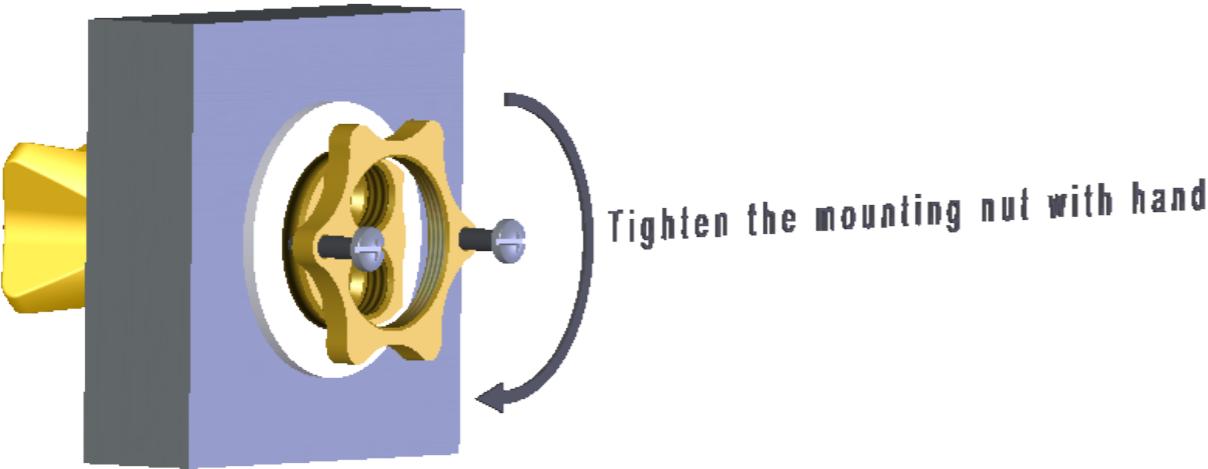


# Mounting instruction for front control valves and outlets

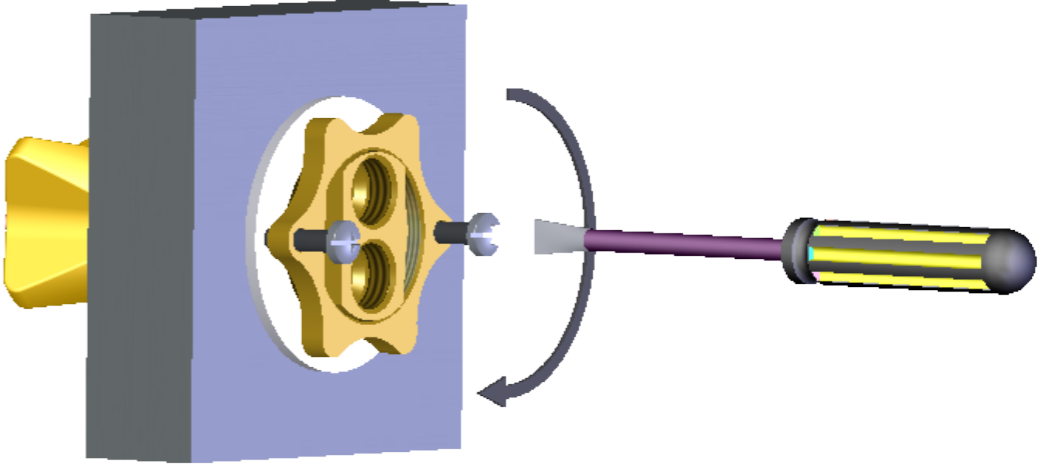
## Mounting of valves



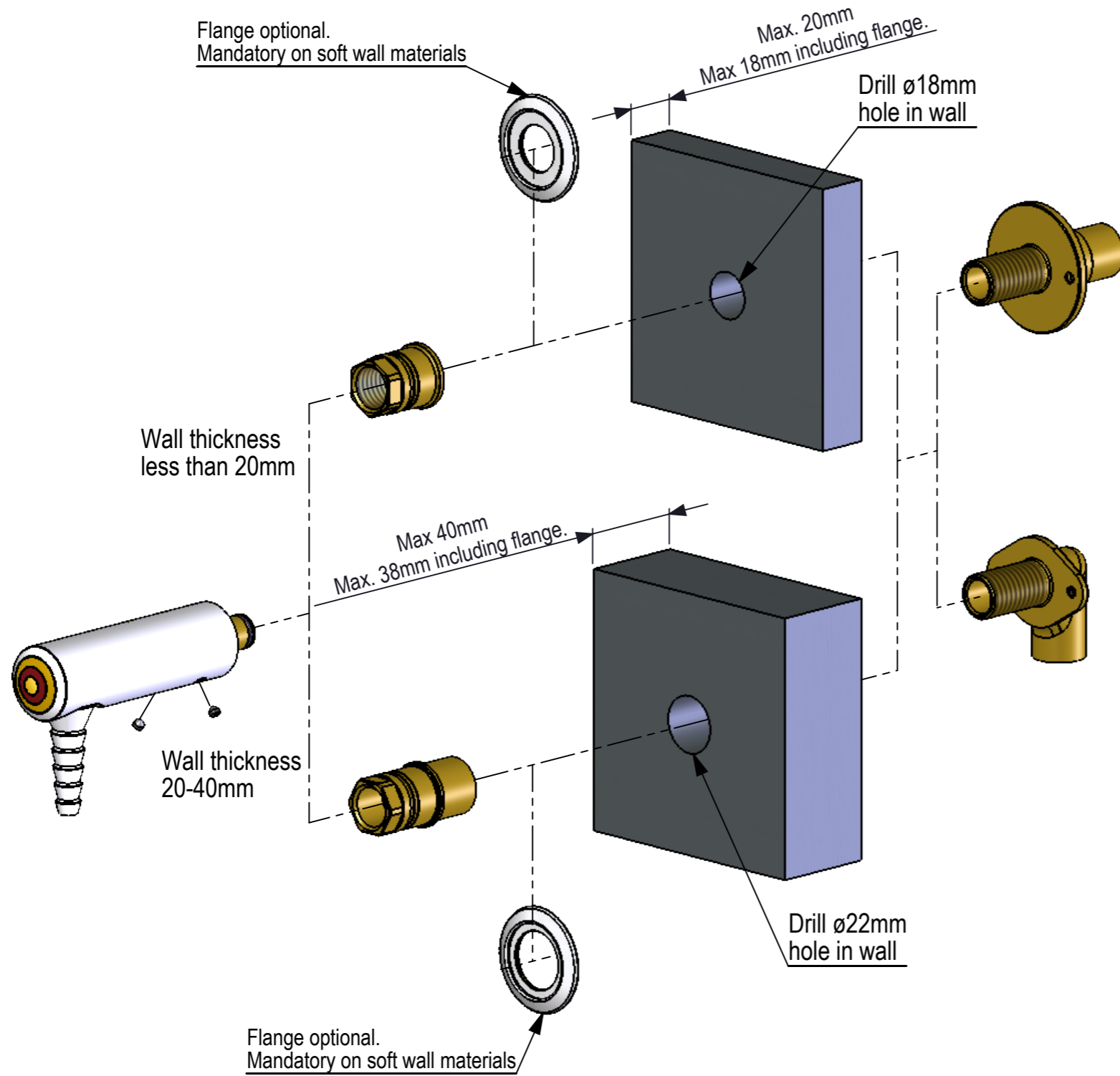
Step 1



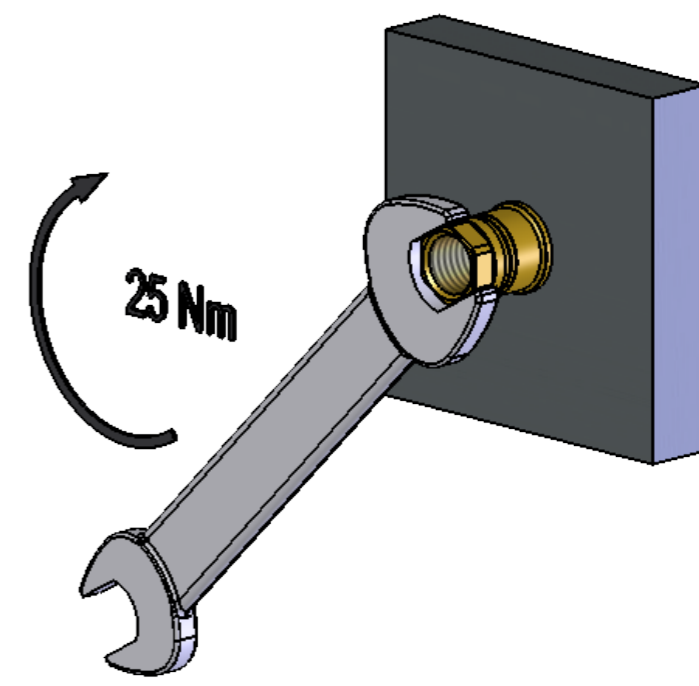
Step 2



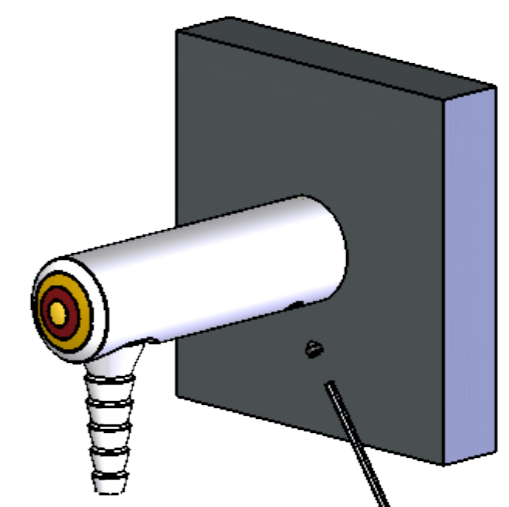
# Mounting of outlets



Step 1

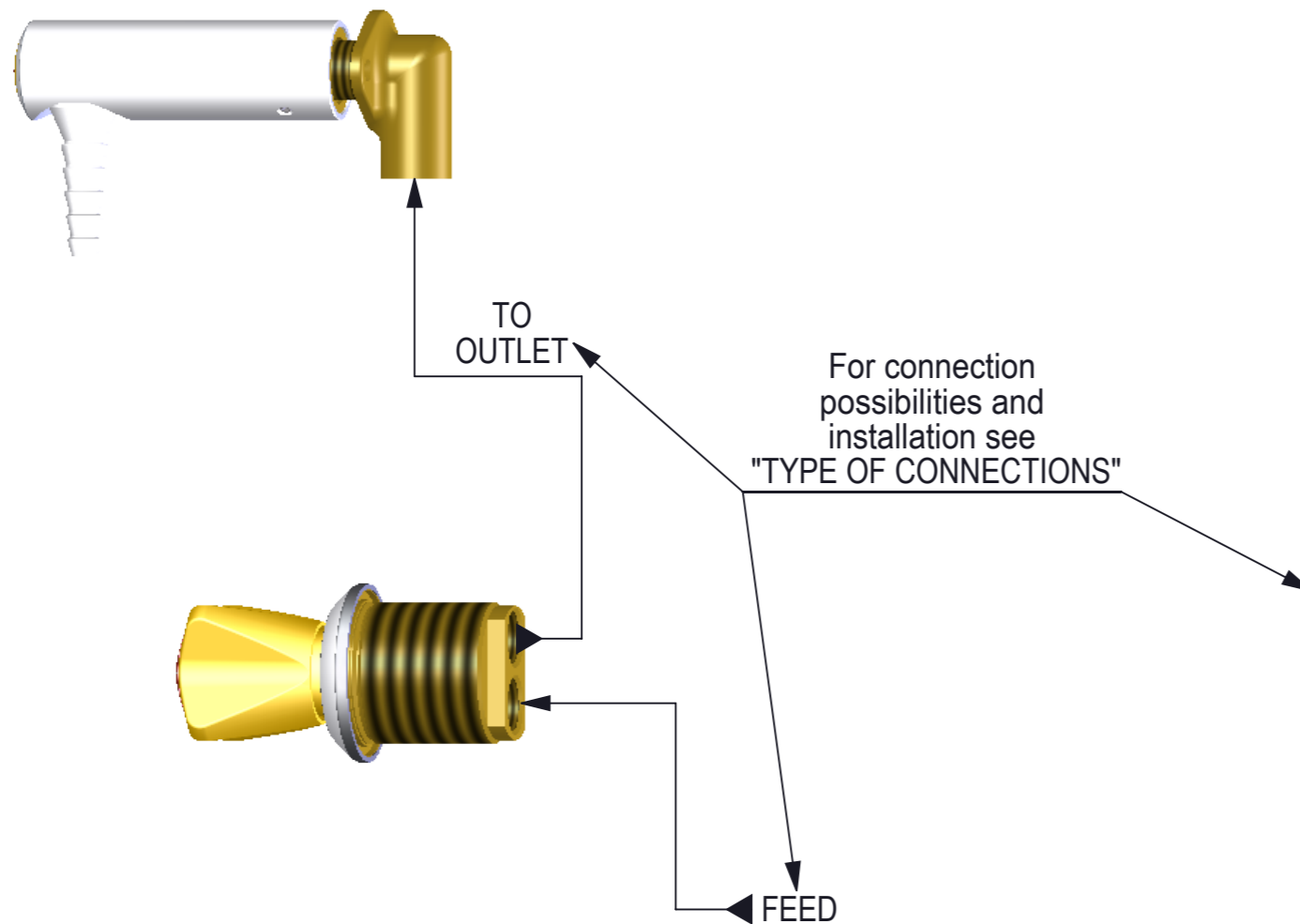


Step 2



# Mounting of pipe connections

Please note:  
Mounting instruction for connections depends on media type, pipe and hose type.



**TYPE OF CONNECTIONS:**

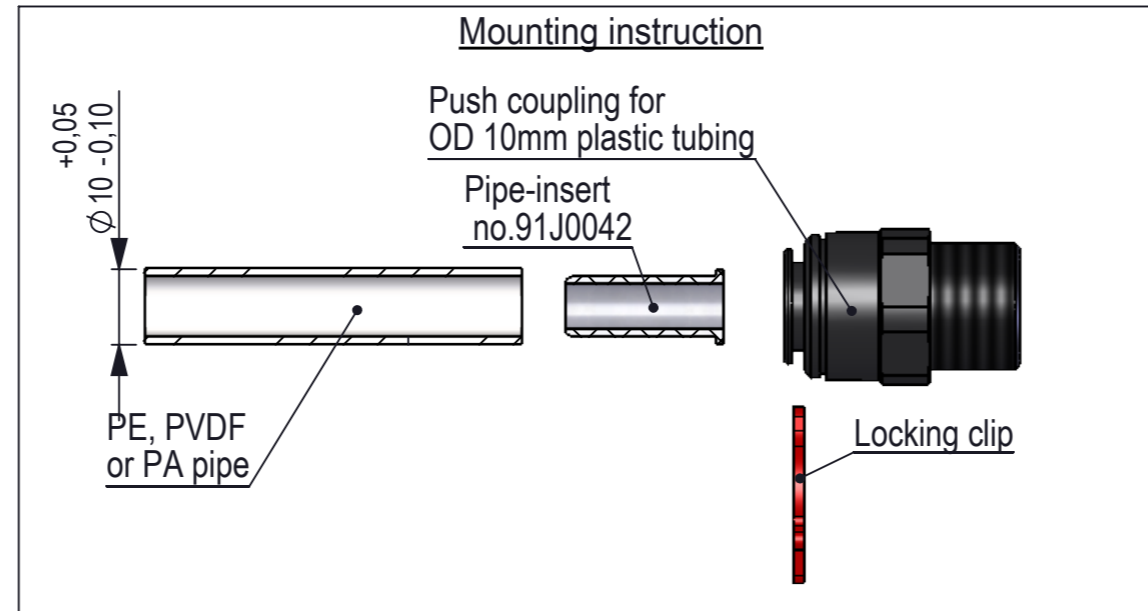
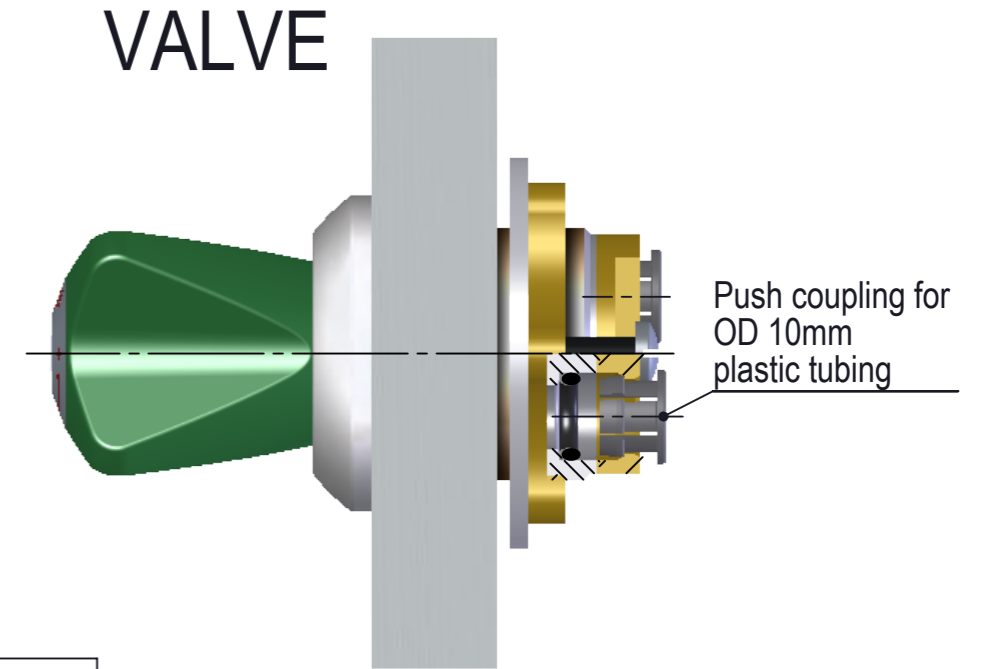
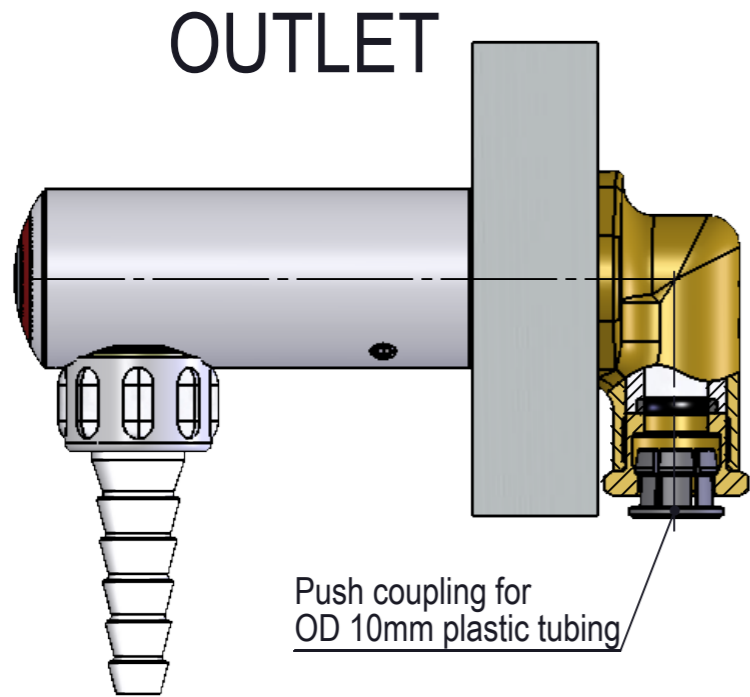
 PIPES WITH BROEN-LAB UniFlex compression fittings:  
See drawing 99G0004 and installation instruction 94G0140

**Examples**

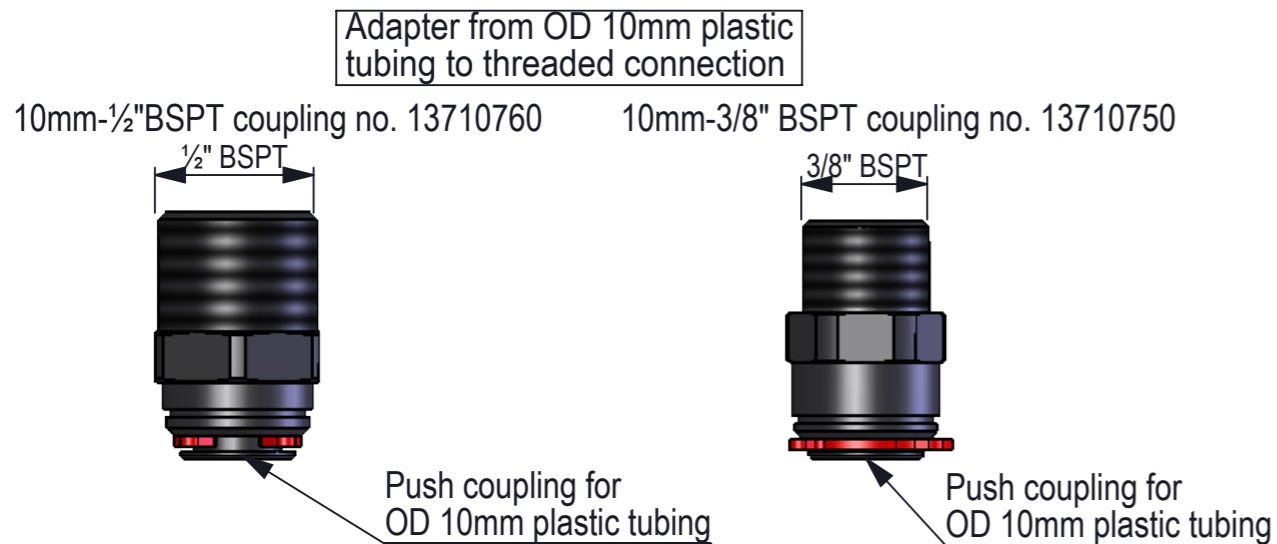
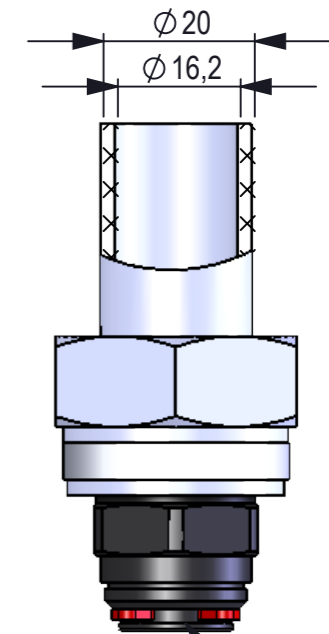
 BROEN-LAB UniFlex Hoses/Flexible steel pipe:  
For Water  
See drawing 93VXXXXXXXX and 93PXXXXXXXX  
For Special Water  
See drawing 93DXXXXXXXX, 93NXXXXXXXX and 93EXXXXXXXX  
For 2.0 Technical gasses  
See drawing 93TXXXXXXXX  
For Burning gasses  
See drawing 93GXXXXXXXX and 93MXXXXXXXX  
For Oxygen and 4.0-5.0-6.0 Clean gases  
See drawing 93RXXXXXXXX and 93SXXXXXXXX  
See installation instruction 94G0013  
See BROEN-LAB UniFlex hoses 99G0005

 BROEN-LAB UniFlex connecting pieces:  
See drawings  
2510Overview900, 2510Overview901  
2510Overview902, 2510Overview903 and  
2510Overview904

# Mounting of piping on valves and outlets in PP for special water



20mm PP-N x 10mm coupling no. 13710770  
Adapter from OD 10mm plastic tubing to-, butt-, socket- & BCF® - welding



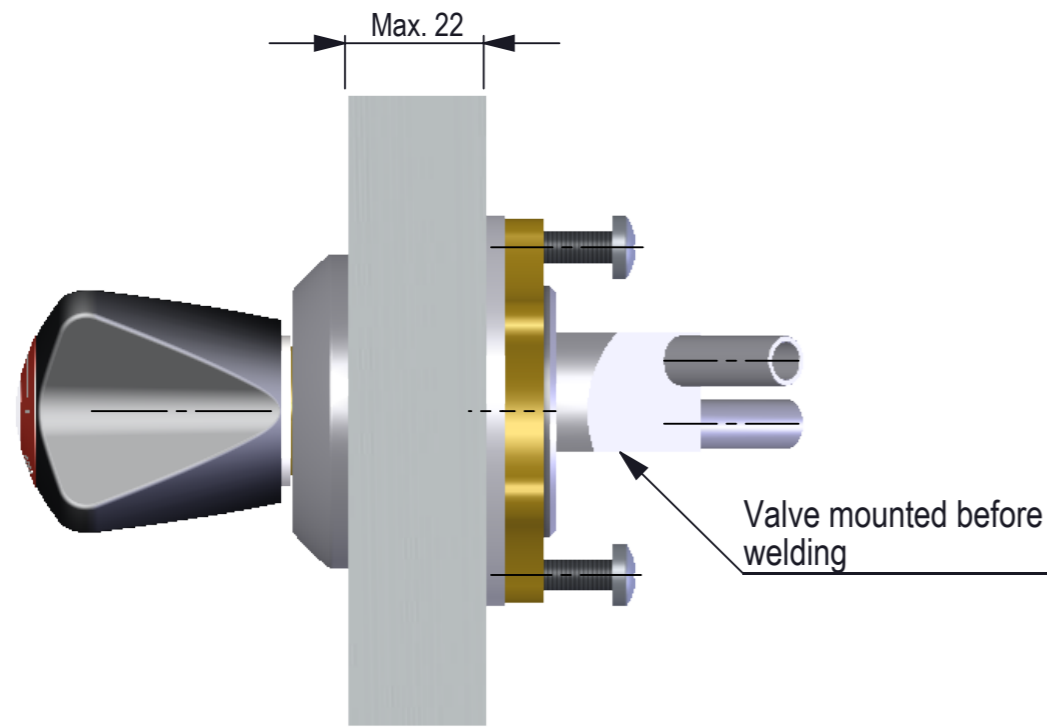
Suitable pipes for special water:  
Nylon (PA) (BROEN-LAB no. 91J0043)  
PE  
PVDF

Pipe must be deburred and free of scratches or other damages on the outside.

Please note: Always mount pipe-insert no. 91J0042

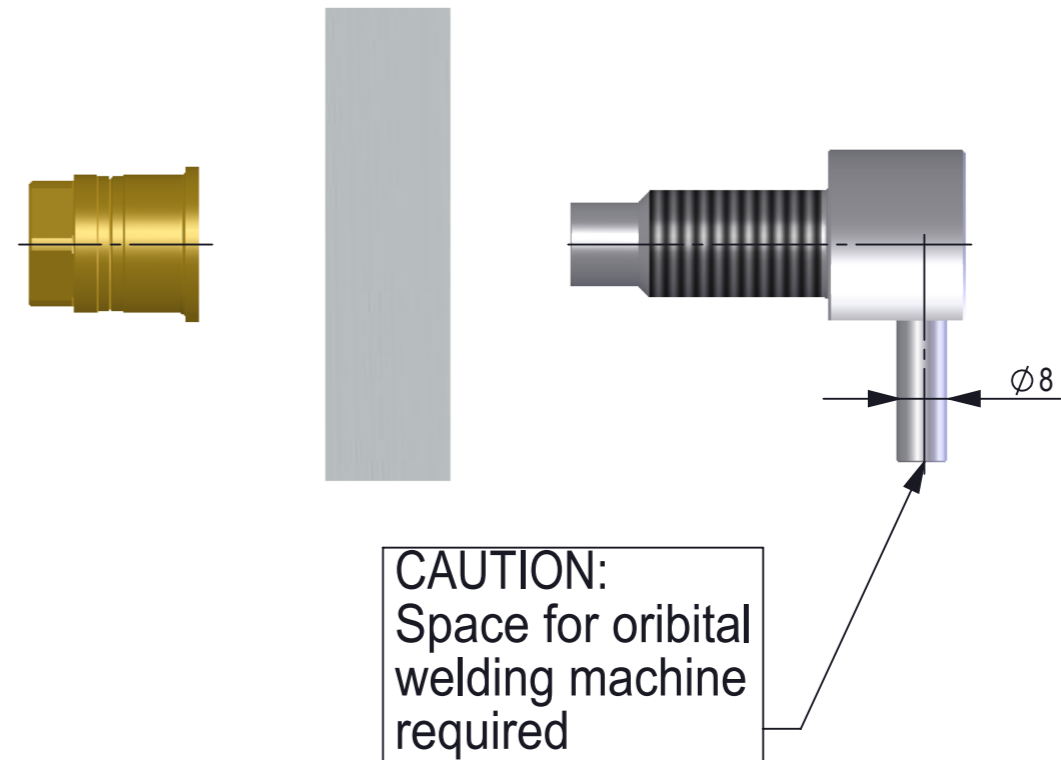
Push coupling for OD 10mm plastic tubing

# Orbital welding for valves and outlets for corrosive gases

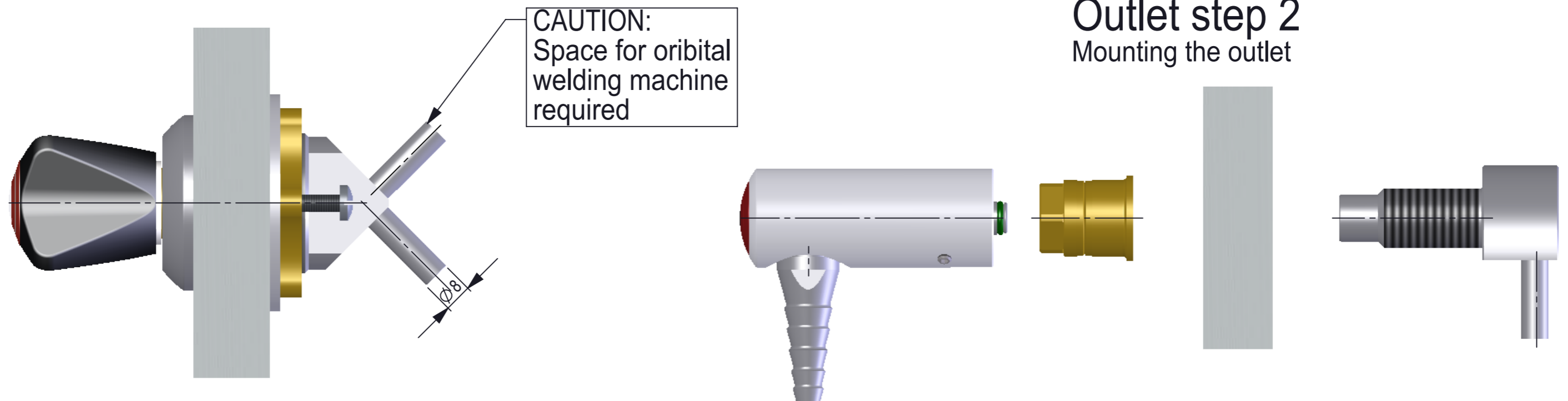


Preferred connection: Orbital welded OD8x1mm tubing AISI316L  
Alternative connection: Use Stainless Steel Swagelok fittings

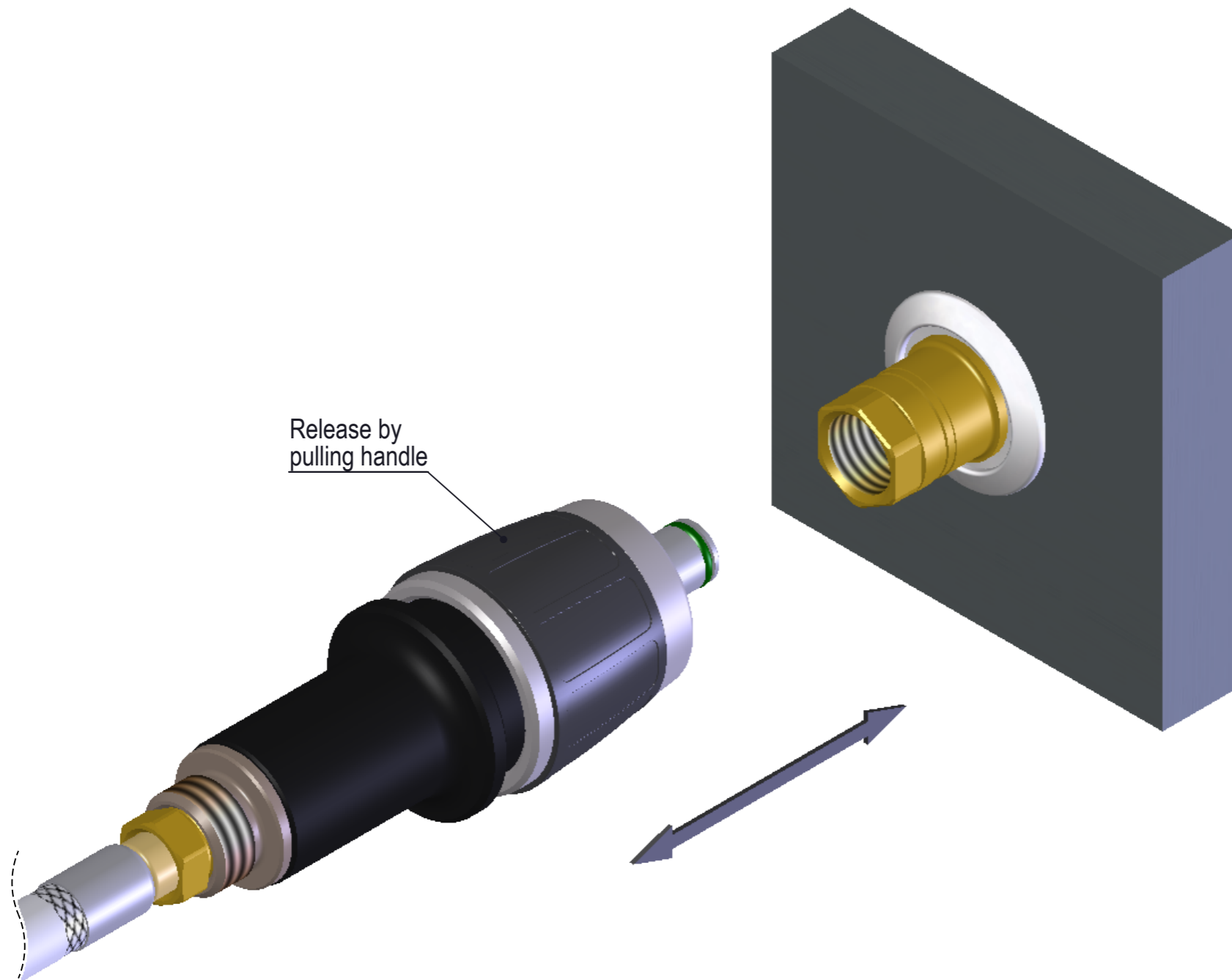
## Outlet step 1. Welding must be done prior to assembly.



## Outlet step 2 Mounting the outlet



## Mounting of test equipment



- 1: Pull handle for mounting
- 2: Push on the RWC
- 3: Begin testing
- 4: Release by pulling handle